

A photograph of a wooden building with a porch, overlaid with a large red 'TRADE' stamp. The stamp is a thick red outline containing the word 'TRADE' in bold, red, sans-serif capital letters. The background shows a wooden structure with a corrugated metal roof and some foliage in the foreground.

**TRADE**

# Product Catalogue



# About

Based in Swindon on our own property, we welcome all trade professionals and individuals to purchase a range of timber products.

Some of our most popular products include all timber sheds, fencing, and wooden posts.

All wood from EW is pressure treated to extend the life cycle and is FSC approved.

Every one of our products are produced by hand, in our state of the art workshop on site.



# Contents

---

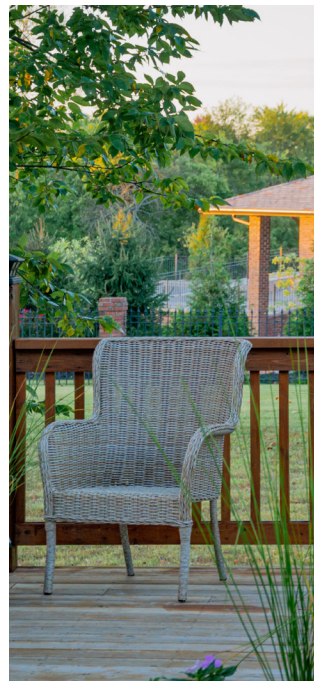


**4**  
Gates

**7**  
Sheds



**9**  
Fencing Materials



**13**  
Concrete

**5**  
Garden Accessories

**8**  
Fencing Panels

**12**  
Timber



# Gates

A normal security measure, gates provide the necessary protection and security for most properties. Browse our selection of ready made gates here.



Close Board Gates

## Price

**6x3** - £119.95

**6x4** - £139.95



Shiplap Gates

## Price

**6x3** - £139.95





# Garden Accessories

Planters

There are many uses for sustainable wood and timber other than fencing, that are benches, bin storage cupboards and more.



Water Butts

## Sizes and Prices

100L - £31

227L - £71



3 Seater Bench

**Size:**

1.5m

**Price:**

£375

# HOT SELLERS

## BIN STORES



1 Bin / 4 Box Bin store

**Size:**

1.5m L x 900mm D x 1330mm H

**Price:**

£180



2 Bin / 4 Box Bin store

**Size:**

2.4m L x 900mm D x 1330mm H

**Price:**

£295





# Sheds

Our sheds are made on site using pressure treated shiplap timber. They are supplied flat pack with felt and fixings and have 1 x window + 1 door.

All of our sheds are bespoke made in our top of the range workshop.

If you need a specific size, please get in touch.



**6ft x 4ft Apex**

£595.00



**7ft x 5ft Apex**

£795.00



**8ft x 6ft Pent**

£895.00



# Fencing Panels



Overlap Panel

## Sizes and Prices

- 6ft x 6ft - £44
- 6ft x 5ft - £39
- 6ft x 4ft - £37
- 6ft x 3ft - £35.50



C/Board Panel

## Sizes and Prices

- 6ft x 6ft - £49.50
- 6ft x 5ft - £48
- 6ft x 4ft - £44





# Fencing Materials



Batons

## Sizes and Prices

### 2x1 Baton

50mm x 25mm x 3m -  
£3.75

### 2x1 Baton

50mm x 25mm x 3.6m -  
£5.90

### 2x2 Baton

50mm x 50mm x 4.2m -  
£6.80



Feather Edge Boards

## Sizes and Prices

150mm x 22mm x 1.65m -  
£1.75

150mm x 22mm x 1.8m -  
£1.85

150mm x 22mm x 2.4m -  
£2.45



**Gravel Boards**

**Sizes and Prices**

150mm x 22mm x 3m -  
£6.95

150mm x 22mm x 3.6m -  
£8.45



**Carcassing Rails**

**Sizes and Prices**

100mm x 50mm x 3m -  
£10.50

100mm x 50mm x 3.6m -  
£12.50

150mm x 50mm x 4.8m -  
£17.95



**Fencing Rails**

**Sizes and Prices**

38mm x 88mm x 3m -  
£6.45

38mm x 88mm x 3.6m -  
£8.95



**Picket Pales**

**Sizes and Prices**

22mm x 75mm x 1200mm -  
£2.95

22mm x 75mm x 1800mm -  
£3.50



**Shiplap - Pressure Treated**

**Sizes and Prices**

Per metre - £3.25



**CLS Indoor Timber -  
untreated**

**Sizes and Prices**

100mm x 47mm x 2.4m -  
£9.95





Sleepers

**Size:**

100mm x 200mm  
x 2.4m

**Price:**

£27.95



Green Felt

**Size:**

10m

**Price:**

£45



Fence Capping

**Sizes and Prices**

**Flat Capping**

65mm x 25mm x 3m -  
£4.25

**Apex Capping**

63mm x 38mm x 3m -  
£5.25



Pressure Treated Posts

**Sizes and Prices**

**3"Post**

75mm x 75mm x 1.8m - £12.50

75mm x 75mm x 2.4m - £14.00

**4"Post**

100mm x 100mm x 1.8m - £13.50

100mm x 100mm x 2.4m - £16.95

100mm x 100mm x 3m - £22.50

**6"Post**

150mm x 150mm x 2.4m - £37.50

# Decking

Timber decking is sleek and sophisticated and adds a luxurious finishing touch to a garden area. Decking is also a great entertainment area and offers a relaxing chill out area.

Timber decking if maintained correctly can last many years. It is a great environmentally friendly solution. Our timber decking is sourced from FSC and is pressure treated to lengthen its lifespan.



## **2.4m Length Decking Board**

£8.95

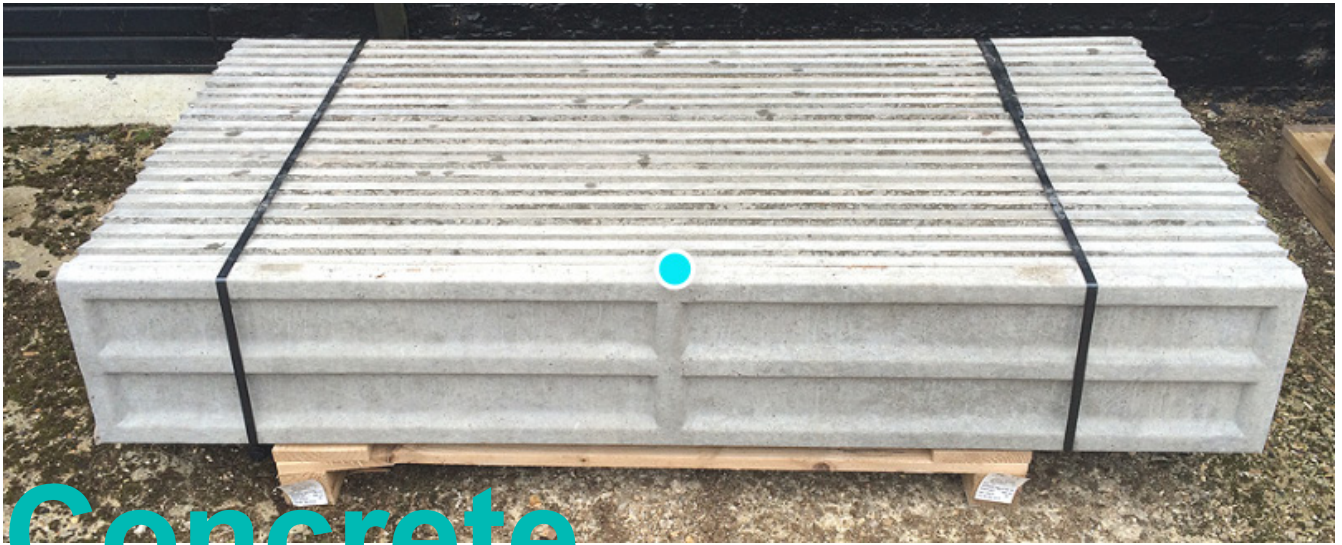
## **3.6m Length Decking Board**

£15.00

## **4.8m Length Decking Board**

£19.00





# Concrete



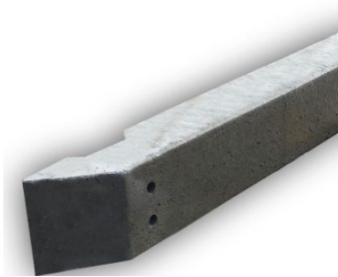
**Price**  
£5.95

Postcrete - 20kg Bag



**Price**  
£6.95

Cement - 25kg Bag



**Recessed Arris Rail Post**

### Sizes and Prices

8ft3' - £47



**Gravel Board**

### Sizes and Prices

6' Plain - £30.00

12' Plain - £37

6' Recessed - £24

12' Recessed - £34

12' Rock faced - £34

3m - £37



**Repair Spur**

### Sizes and Prices

4ft x 4ft - £22



**Slotted Post**

### Sizes and Prices

6ft - £36

8ft - £38

9ft - £41



**Slotted Corner Post**

### Sizes and Prices

8ft - £46

9ft - £49



**Slotted End Post**

### Sizes and Prices

8ft - £44

9ft - £48



• • •

Unit 1A & 1B, Gipsy Lane, Swindon, SN2 8DT

[www. enterpriseworksswindon.co.uk/](http://www.enterpriseworksswindon.co.uk/)

07392 109856

01793 464771

[enterpriseworks2@swindon.gov.uk](mailto:enterpriseworks2@swindon.gov.uk)

• • •